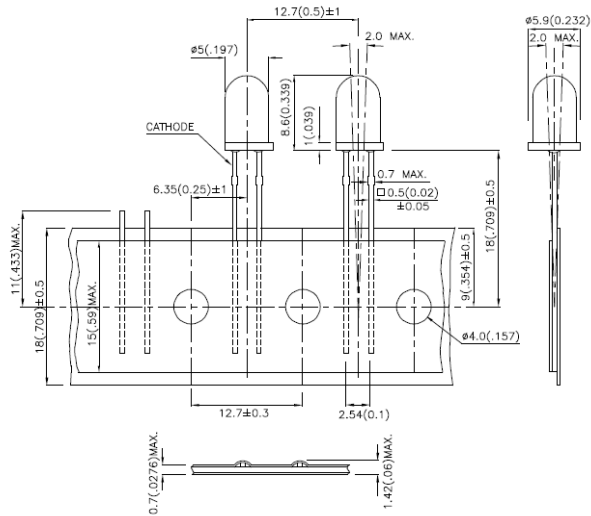


## Package Dimensions

P/N: E53SURCTR  
T-1 3/4 (5mm) TAPE AND REEL LED LAMP



### Notes:

1. All dimensions are in millimeters (inches).
2. Tolerance is  $\pm 0.25(0.01)$  unless otherwise noted.
3. Lead spacing is measured where the lead emerge package.
4. Specifications are subject to change without notice.

Dice	Lens Type	Iv (mcd) @ 20 mA		Viewing Angle
		Min.	Typ.	2θ/2
HYPER RED (InGaAlP)	WATER CLEAR	1500	2200	20°

### Electrical / Optical Characteristics at T<sub>A</sub>=25°C

Symbol	Parameter	Device	Min.	Typ.	Max.	Tolerance	Units	Test Conditions
$\lambda_{peak}$	Peak Wavelength	Hyper Red		640			nm	I <sub>F</sub> =20mA
$\lambda_D$	Dominant Wavelength	Hyper Red		630			nm	I <sub>F</sub> =20mA
$\Delta\lambda_{1/2}$	Spectral Line Half-width	Hyper Red		25			nm	I <sub>F</sub> =20mA
C	Capacitance	Hyper Red		45			pF	V <sub>F</sub> =0V, F=1MHz
V <sub>F</sub>	Forward Voltage	Hyper Red	1.6		1.8	± 0.05	V	I <sub>F</sub> =20mA
			1.8		2.0			
			2.0		2.2			
			2.2		2.4			
			2.4		2.5			
I <sub>R</sub>	Reverse Current	Hyper Red			10		uA	V <sub>R</sub> = 5V

### Absolute Maximum Ratings at T<sub>A</sub>=25°C

Parameter	Hyper Red	Units
Power dissipation	150	mW
DC Forward Current	30	mA
Peak Forward Current [1]	200	mA
Reverse Voltage	5	V
Operating/Storage Temperature	-40°C To +85°C	
Lead Solder Temperature [2]	260°C For 5 Seconds	

#### Notes:

1. 1/10 Duty Cycle, 0.1ms Pulse Width.
2. 2mm below package base.